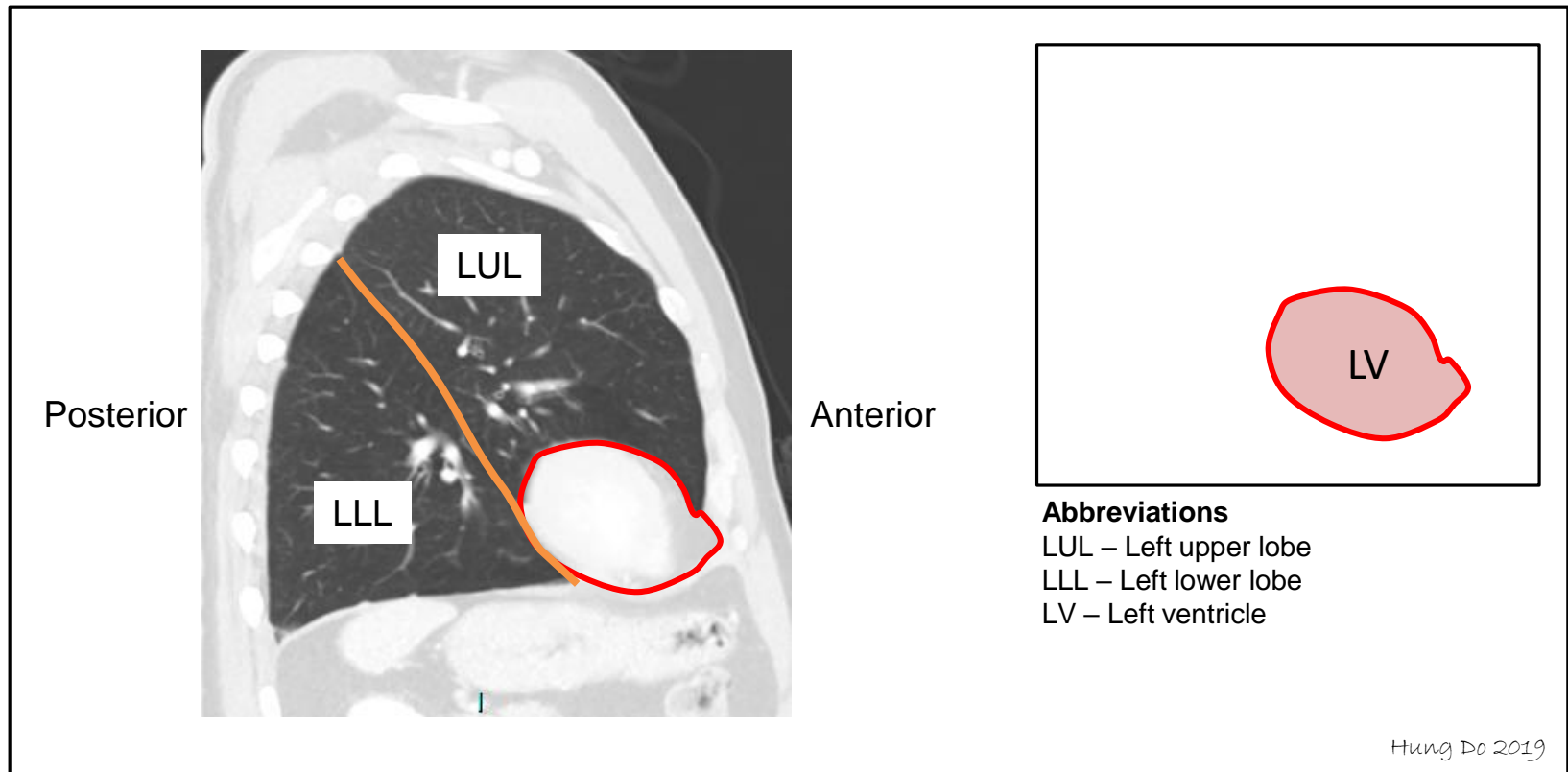


Silhouette Sign – Left Lung



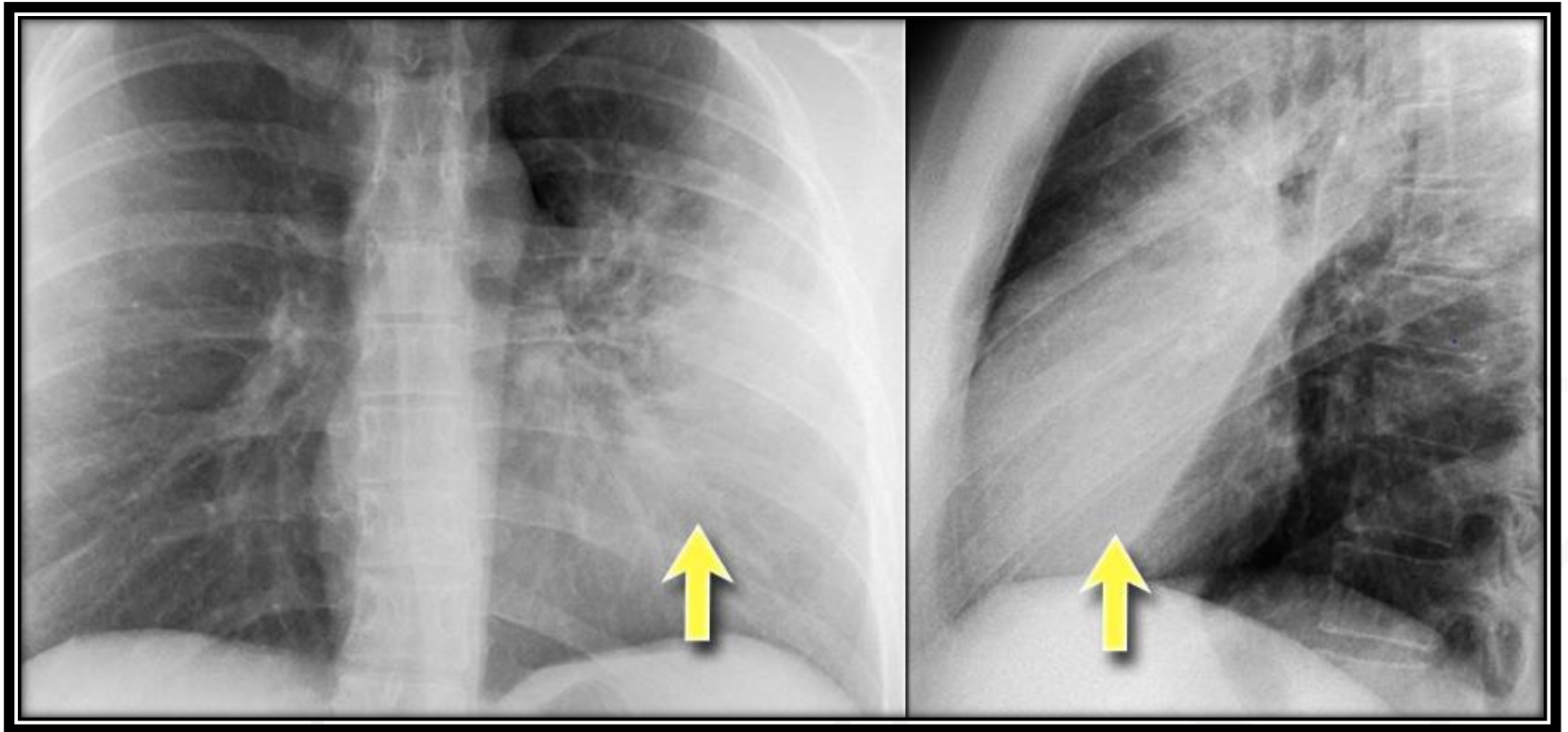
Left: sagittal CT image through the middle of the left thorax in lung windows.

NB: Sagittal thorax views are normally presented facing the other way but this image has been flipped to more accurately represent a left lateral chest x-ray. This image demonstrates the oblique fissure (orange line). The lobes are labelled appropriately. The sagittal heart outline (red outline) demonstrates its anterior position and its close proximity to the LUL.

Right: annotated diagram of the heart.

Silhouette Sign – Left Lung

LUL pathology

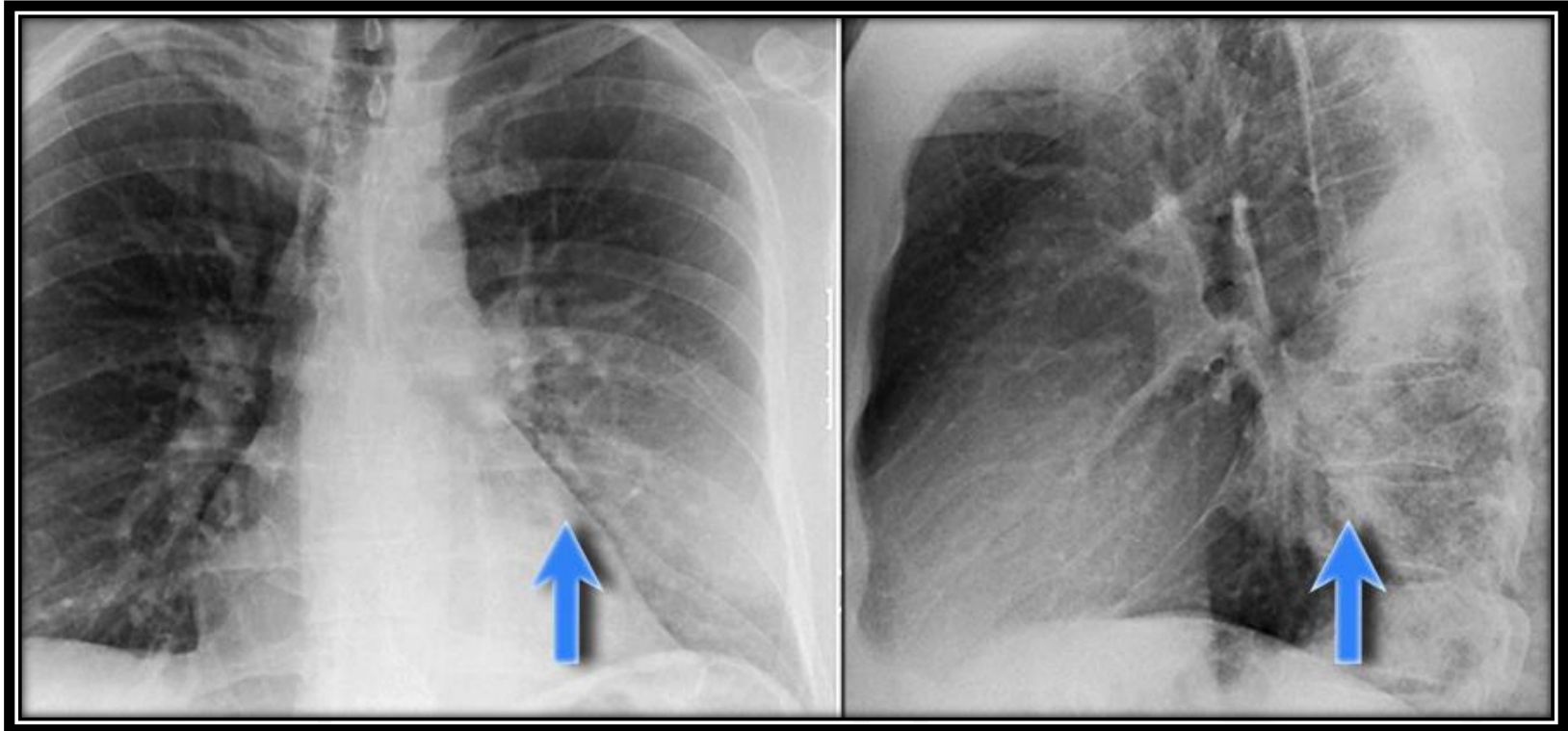


Left: PA image showing loss of left cardiac border as annotated by yellow arrow. The heart is located in the anterior chest compartment and is bordered by the lingua of the left lung. Often if there is pathologies with similar tissue density to the heart located near the lingua of the LUL, the normal cardiac border will be lost. NB: The rationale for detection of apical LUL pathology is the same.

Right: The lateral view confirms the pathology is located anteriorly in the LUL.

Silhouette Sign – Left Lung

LLL pathology



Left: PA image showing no loss of left cardiac border as annotated by blue arrow. The heart is located in the anterior chest compartment and is bordered by the lingua of the left lung. Since there is no loss of heart border, the pathology is most likely contained in the posterior compartment and in the LLL.

Right: The lateral view confirms the pathology is located anteriorly in the LLL.